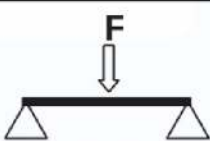


FLEXTRACK HEAVY



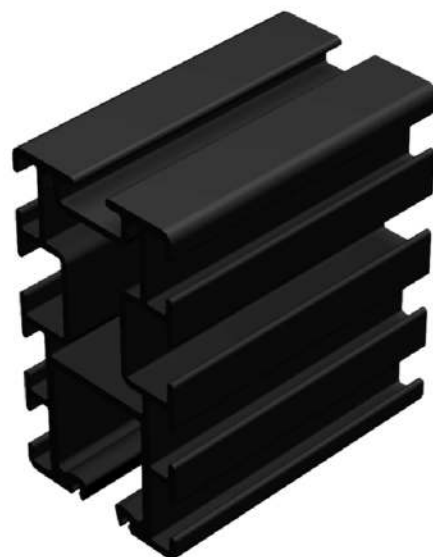
FLEXTRACK HEAVY IS A MULTI-PURPOSE TRACK-SYSTEM IN ANODIZED BLACK ALUMINUM. DESIGNED FOR HEAVY CURTAINS AND SCENERY CARRIERS.

LOADTABLE (5MM DEFLECTION)

LENGHT [M]	CENTRE POINT LOAD [KG]	F	
			UNIFORMLY DISTRIBUTED LOAD [KG]
1,0 M	3380 KG		5400 KG
2,0 M	420 KG		670 KG
3,0 M	125 KG		200 KG
4,0 M	50 KG		80 KG
5,0 M	25 KG		40 KG
6,0 M	15 KG		25 KG

Functions

- Aluminum profile 108,5 x 60 mm
- Available curved in radius 32,5 m
- Matt black anodized
- Multi-functional i.e. can always be enlarged
- Motorized or with manual operation
- Broad range of configurations and setups for mounting
- Cord or motor-driven
- Material: EN AW 6060 - T6



**PribeHOLD**